

Man AHL Diversified (Guernsey)



Monthly Report as of 30 November 2017

Inception Date : 04 January 2008 **Total Platform AUM :** (USD) 289,766,497 **ISIN :** GG00B29ZZ042

Fund Risks

Prior to investing in the Fund investors should carefully consider the risks associated with investing, investors should consider the following risks and where appropriate seek professional advice before investing: Market Risk, Counterparty Risk, Currency Risk, Liquidity, Financial Derivatives, Leverage, Emerging Markets, Model and Data Risk and Commodity Risk. More details can be found in the Risk Glossary.

Monthly commentary

November finally saw the long-promised US tax reforms gain legislative traction, spurring the already rampant S&P500 to its strongest monthly gain since February. In Europe, however, sentiment was more mixed as Angela Merkel's initial attempt to form a German coalition government broke down, and the Bank of England lifting rates for the first time in 10 years. Performance was balanced at the Fund level, with positive returns coming from currency, equities, fixed income and credit trading almost perfectly matching losses from commodities, ending the month at -0.43%.

FX performance was led by longs in the Korean won against the US dollar, as South Korean data releases indicated stronger Q3 GDP growth and a record

current account surplus. Euro strength against both the Swedish and Norwegian currencies also benefited the programme, whilst a short in yen suffered as the US dollar retreated.

Global stock indices continued to make new highs, with the Fund benefiting as the Nikkei surged to its highest close in 25 years. However, it was shorts in European media stocks that added more than any individual index future longs, and a retreat in the Kospi saw matching losses.

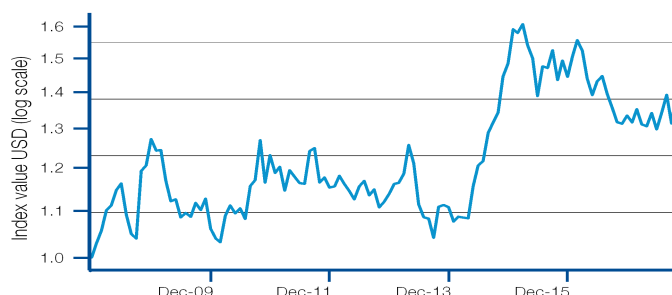
Long positioning in Italian 10-year bonds as well as short in US 2 year treasury notes led gains in fixed income, although these were tempered by small losses on positions in 5 year markets in both the US and Germany. Credit trading continued to push modest gains in performance although contribution was bifurcated regionally. US and EM credit losses on long positions were outweighed by profits on long European indices.

Commodities were the detracting asset class in November. A short position in natural gas produced the largest losses as an early month cold snap coupled with tighter inventories drove prices higher. Length in industrial metals also dragged on performance. Positive contribution came from longs in the crude oil complex.

Net Performance and Risk*

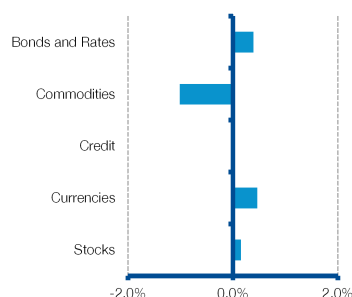
	Product
Last month	-0.43 %
Last 3 months	0.28 %
Year to date	4.60 %
Last 12 months	6.34 %
Last calendar year	-7.59 %
Total return	39.61 %
Annualised return	3.42 %
Annualised volatility	13.52 %
Sharpe ratio ¹	0.20
Worst drawdown ²	-19.25 %
Drawdown Length	27 months
No of Drawdowns	4

Performance chart 04 January 2008 to 30 November 2017*

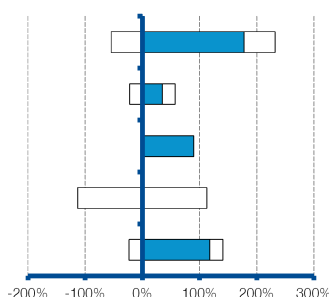


VaR (99%)	2.22 %
Expected Shortfall (99%) ³	2.52 %
Leverage ⁴	8.46

Gross Performance Contribution⁵



Sector Exposure⁶



Exposure and VaR (99%)⁶

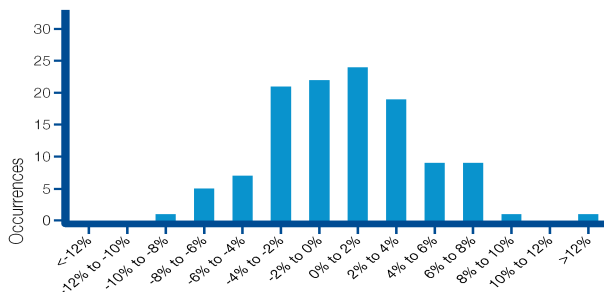
	Short	Long	Net	VaR
Bonds and Rates	-54.36	232.36	178.00	0.81
Commodities	-22.22	57.38	35.16	0.74
Credit	0.00	89.86	89.86	0.11
Currencies	-112.90	112.90	N/A	0.56
Stocks	-22.92	141.11	118.19	1.03

*Unless otherwise indicated, the performance data in this report is based on the reporting share class of the Fund (shown in blue in the NAV table). Past performance is not indicative of future results. Returns may increase or decrease as a result of currency fluctuations. Performance data is shown net of fees with income reinvested and does not take into account sales and redemption charges where such costs are applicable.

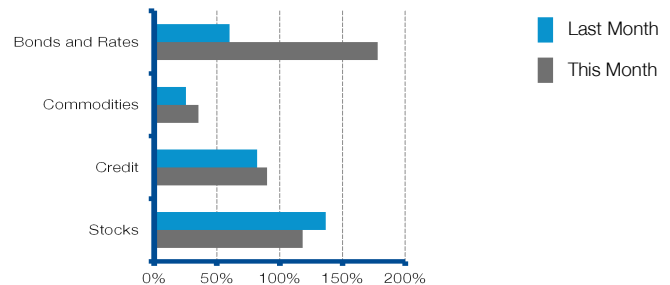
Man AHL Diversified (Guernsey)



Distribution of Monthly Returns
04 January 2008 to 30 November 2017



Net Exposure Monthly Comparison



Top 5 Markets ⁷

	MTD	EOM Position ⁸
South Korean Won/US Dollar	0.29 %	Long
Italian Bonds - 10yr	0.23 %	Long
Euro/Swedish Krona	0.22 %	Long
Europe-Media	0.20 %	Short
Euro/Norwegian Krone	0.19 %	Long

Bottom 5 Markets ⁷

	MTD	EOM Position ⁸
Natural Gas - US	-0.55 %	Short
Korean Kospi	-0.20 %	Long
Aluminium	-0.20 %	Long
Japanese Yen/US Dollar	-0.18 %	Short
Copper	-0.17 %	Long

Commodities Net Exposure

Energies	21.92 %
Metals	21.76 %
Agriculturals	-8.52 %

Sector

	CS01 ¹⁰	DV01 ¹¹
Credit	-0.04 %	0.00 %
Bonds and Rates	0.00 %	-0.17 %

Sovereign Bond Net Exposure

G10	107.30 %
Non G10	24.00 %

Top 5 Currency Exposure

USD	-61.83 %
PLN	27.61 %
EUR	25.94 %
CHF	-19.24 %
AUD	-19.04 %

Equity Sector Exposure

Broad Market Indices	83.00 %
ETFs	2.10 %
Consumer Discretionary	2.14 %
Consumer Staples	-0.41 %
Energy	-0.72 %
Financials	2.10 %
Health Care	-2.16 %
Industrials	12.32 %
Information Technology	10.68 %
Materials	8.85 %
Real Estate	1.05 %
Telecommunication Services	-2.26 %
Utilities	1.48 %

Option Positioning by Asset Class

	Position	Vega ⁹
Commodities	Short vol	0.00 %
Equity	Short vol	-0.01 %
FX	Short vol	-0.02 %
Fixed Income	Short vol	-0.02 %

*Unless otherwise indicated, the performance data in this report is based on the reporting share class of the Fund (shown in blue in the NAV table). Past performance is not indicative of future results. Returns may increase or decrease as a result of currency fluctuations. Performance data is shown net of fees with income reinvested and does not take into account sales and redemption charges where such costs are applicable.

Man AHL Diversified (Guernsey)



Historical performance* 12

Year	Jan	Feb	Mar	Apr	May	Jun	Jul	Aug	Sep	Oct	Nov	Dec	YTD 13
2017	-1.36 %	2.70 %	-3.03 %	-0.38 %	2.72 %	-3.26 %	3.40 %	3.74 %	-5.67 %	6.76 %	-0.43 %		4.60 %
2016	4.27 %	3.32 %	-2.13 %	-5.48 %	-3.30 %	2.81 %	1.10 %	-3.57 %	-2.75 %	-2.92 %	-0.31 %	1.66 %	-7.59 %
2015	7.18 %	-0.74 %	1.80 %	-4.17 %	-2.66 %	-7.36 %	6.24 %	-0.33 %	3.64 %	-5.85 %	4.01 %	-3.23 %	-2.68 %
2014	-2.91 %	0.99 %	-0.16 %	-0.16 %	6.75 %	4.30 %	0.90 %	5.90 %	2.10 %	2.07 %	7.58 %	2.72 %	33.93 %
2013	2.06 %	0.19 %	1.88 %	6.02 %	-3.67 %	-7.98 %	-2.60 %	-0.29 %	-3.81 %	6.48 %	0.39 %	-0.44 %	-2.66 %
2012	0.25 %	2.16 %	-1.63 %	-1.44 %	-1.67 %	2.66 %	1.12 %	-2.87 %	1.18 %	-3.56 %	1.11 %	1.64 %	-1.27 %
2011	-3.53 %	1.24 %	-4.70 %	4.21 %	-1.32 %	-1.27 %	-0.13 %	6.88 %	0.59 %	-6.74 %	1.01 %	-2.03 %	-6.37 %
2010	-1.96 %	-0.78 %	5.56 %	2.08 %	-1.59 %	1.03 %	-2.12 %	6.90 %	1.20 %	8.47 %	-8.25 %	5.71 %	16.10 %
2009	-2.32 %	0.13 %	-6.05 %	-4.08 %	0.38 %	-3.61 %	0.89 %	-0.78 %	2.86 %	-1.41 %	2.30 %	-5.90 %	-16.65 %
2008	3.03 %	2.48 %	4.31 %	0.94 %	3.18 %	1.36 %	-6.14 %	-3.85 %	-0.92 %	14.71 %	1.15 %	5.50 %	27.25 %

NAV Table 14 15

Class	NAV	ISIN	Bloomberg	Institutional or Distribution	Last month %	2014 Return	2015 Return	2016 Return
A USD	1.40	GG00B29ZZ042	MAHLDGD GU	D	-0.43 %	33.93 %	-2.68 %	-7.59 %
B EUR	1.23	GG00B3CZNT35	MANADGE GU	D	-0.60 %	33.77 %	-2.78 %	-8.92 %
C CHF	1.04	GG00B3CTZD37	MANAHLG GU	D	-0.63 %	34.13 %	-3.61 %	-9.56 %
E AUD	1.34	GG00B3X89L55	MADIGAA GU	D	-0.50 %	35.33 %	-0.96 %	-7.61 %
G RMB	12.60	GG00B3WXTG65	MDRMBGA GU	D	-0.44 %	35.33 %	-0.48 %	-6.55 %

Key Facts 16

Investment manager	AHL Partners LLP	Management fee	Up to 3% per annum
Administrator	BNY Mellon Fund Services (Ireland) Designated Activity Company	Introducing Broker fee	1% per annum
Valuation agent	Citibank Europe plc	Minimum investment	From USD 30,000
Performance fee	20%	Currencies	USD / EUR / CHF / AUD / RMB

¹ Sharpe ratio is calculated using a risk-free rate in the appropriate currency over the period analysed. Where an investment has underperformed the risk-free rate, the Sharpe ratio will be negative. Because the Sharpe ratio is an absolute measure of risk-adjusted return, negative Sharpe ratios are not shown as they can be misleading. The risk-free rate used for Sharpe ratio calculation is the 3 month USD Libor. ² The drawdown is the percentage drop in the price of an investment from its last peak price. The worst drawdown represents the greatest peak to trough decline over the life of an investment. ³ Expected Shortfall is defined as the average of all losses which are greater than or equal to VaR. ⁴ Leverage displayed here is calculated using the sum of gross exposure from each sector traded by the AHL Programme and therefore does not include leverage from FX hedging or cash management and in no way reflects regulatory leverage calculations. Exposure calculations used are the same as detailed in the exposure reference note with exposures netted at the underlying security level. ⁵ The figures are estimated and generated on a fund level and do not take into account the fees/interest/commission charges on any particular account. Differences may also occur due to slippage variation, portfolio changes, FX movements and post execution adjustments. Therefore the sum total of these sector indications will not necessarily equate to the reported performance for the month in question. ⁶ Exposure values represent the delta notional value of positions expressed as a percentage of fund capital. Where applicable, fixed income exposures are adjusted to a 10 year bond equivalent. Currency exposure within this table only reflects that of the Currency sector traded by AHL and does not include FX hedging or cash management. For credit default swaps, a short position represents buying protection and a long position represents selling protection. ⁷ The organisations and/or financial instruments mentioned are for reference purposes only. The content of this material should not be construed as a recommendation for their purchase or sale. ⁸ End of month (EOM) position. ⁹ The measurement of an option's sensitivity to changes in the volatility of the underlying asset. Vega represents the amount that an option contract's price changes in reaction to a one percent change in the volatility of the underlying asset. ¹⁰ CS01 is the impact on the fund in response to a one basis point increase in credit spreads. ¹¹ DV01 is the impact on the fund in response to a one basis point increase in interest rates. ¹² Please note that statistics have been calculated using the last weekly valuation of each month up to and including 30th June 2014. From that date forward a non-dealing calendar month end NAV has been used for the purposes of reporting monthly returns and performance statistics. ¹³ When 12 months of performance data is unavailable for a calendar year, partial year to date is shown. ¹⁴ The ISINs shown here are for tranche B of each class. Tranche A is closed to new investment for the AUD, CHF and RMB classes. NB the tranche A ISINs are as follows for each class: USD = GG00B29ZYR48, EUR = GG00B3CTZB13, CHF = GG00B3CTZD37, AUD = GG00B3X89L55 and RMB = GG00B3WXTG65. ¹⁵ The performance data is based on the reporting share class of the Fund (shown in blue in the NAV table). ¹⁶ Introducing Broker fee: The fee is payable to Man Investments AG which has been appointed as the Introducing Broker and is responsible for recommending appropriate Brokers to the Fund as well as actively managing these relationships, ensuring appropriate service levels as well as an adequate diversification of Brokers. For full details of fees and expenses which may be incurred by the Fund, including fees payable to members of Man Group, refer to the Fees and Expenses section of the Prospectus or any relevant Prospectus Supplement. Redemption Fee: For tranche A of each share class there is a fee payable on redemption within the first six years. During first two years: 2% of NAV, during the third or fourth year: 1.5% of NAV, during fifth or sixth year: 0.5% of NAV (refer to the Prospectus Supplement for full details).

Risk Glossary

Market Risk: The Fund is subject to normal market fluctuations and the risks associated with investing in international securities markets and therefore the value of your investment and the income from it may rise as well as fall and you may not get back the amount originally invested.

Counterparty Risk: The Fund will be exposed to credit risk on counterparties with which it trades in relation to on-exchange traded instruments such as futures and options and where applicable, 'over-the-counter' ("OTC", "non-exchange") transactions. OTC instruments may also be less liquid and are not afforded the same protections that may apply to participants trading instruments on an organised exchange.

***Unless otherwise indicated, the performance data in this report is based on the reporting share class of the Fund (shown in blue in the NAV table). Past performance is not indicative of future results. Returns may increase or decrease as a result of currency fluctuations. Performance data is shown net of fees with income reinvested and does not take into account sales and redemption charges where such costs are applicable.**

Man AHL Diversified (Guernsey)



Currency Risk: The value of investments designated in another currency may rise and fall due to exchange rate fluctuations. Adverse movements in currency exchange rates may result in a decrease in return and a loss of capital. It may not be possible or practicable to successfully hedge against the currency risk exposure in all circumstances.

Liquidity: The Fund may make investments or hold trading positions in markets that are volatile and which may become illiquid. Timely and cost efficient sale of trading positions can be impaired by decreased trading volume and/or increased price volatility.

Financial Derivatives: The Fund will invest in financial derivative instruments ("FDI") (instruments whose prices are dependent on one or more underlying asset) to achieve its investment objective. The use of FDI involves additional risks such as high sensitivity to price movements of the asset on which it is based. The extensive use of FDI may significantly multiply the gains or losses.

Leverage: The Fund's use of FDI may result in increased leverage which may lead to significant losses.

Emerging Markets: The Fund may invest a significant proportion of its assets in securities with exposure to emerging markets which involve additional risks relating to matters such as the illiquidity of securities and the potentially volatile nature of markets not typically associated with investing in other more established economies or markets.

Model and Data Risk: The Fund's Investment Manager relies on quantitative trading models and data supplied by third parties. If models or data prove to be incorrect or incomplete, the Fund may be exposed to potential losses. Models can be affected by unforeseen market disruptions and/or government or regulatory intervention, leading to potential losses.

Commodity Risk: The Fund may have exposure to commodities, the value of which can be volatile and may carry additional risk. Commodity prices can also be influenced by the prevailing political climate and government stability in commodity producing nations.

Important Information

The value of an investment and any income derived from it can go down as well as up and investors may not get back their original amount invested. Alternative investments can involve significant additional risks.

This material is for information purposes only and does not constitute an offer or invitation to invest in any product for which any Man Group plc affiliate provides investment advisory or any other services. The content is not intended to constitute advice of any nature nor an investment recommendation or opinion regarding the appropriateness or suitability of any investment or strategy and does not consider the particular circumstances specific to any individual recipient to whom this material has been sent. Prior to making any investment decisions, investors should read and consider the fund's offering documents.

Opinions expressed are those of the author as of the date of their publication, and are subject to change.

Some statements contained in these materials concerning goals, strategies, outlook or other non-historical matters may be "forward-looking statements" and are based on current indicators and expectations at the date of their publication. We undertake no obligation to update or revise them. Forward-looking statements are subject to risks and uncertainties that may cause actual results to differ materially from those implied in the statements.

Distribution of this material and the offer of shares may be restricted and the minimum subscription amount may be higher in certain jurisdictions. The product(s) mentioned within this material (i) may not be registered for distribution in your jurisdiction, and (ii) may only be available to professional or otherwise qualified investors or entities. It is important that distributors and/or potential investors are able to ensure compliance with local regulations prior to making a subscription. Please refer to the offering documentation for additional information.

Unless stated otherwise the source of all information is Man Group plc and its affiliates as of the date on the first page of this material.

Unless stated otherwise the source of all market data is Man Group plc.

This material was prepared by AHL Partners LLP ("Investment Manager") (company number OC380907) which is registered in England and Wales at Riverbank House, 2 Swan Lane, London, EC4R 3AD. Authorised and regulated in the UK by the Financial Conduct Authority. This material is distributed pursuant to global distribution and advisory agreements by subsidiaries of Man Group plc ("Marketing Entities"). Specifically, in the following jurisdictions:

Australia: To the extent this material is distributed in Australia it is communicated by Man Investments Australia Limited ABN 47 002 747 480 AFSL 240581, which is regulated by the Australian Securities & Investments Commission (ASIC). This information has been prepared without taking into account anyone's objectives, financial situation or needs.

European Economic Area: Unless indicated otherwise this website is communicated in the European Economic Area by Man Solutions Limited which is an investment company as defined in section 833 of the Companies Act 2006 and is authorised and regulated by the UK Financial Conduct Authority (the "FCA"). Man Solutions Limited is registered in England and Wales under number 3385362 and has its registered office at Riverbank House, 2 Swan Lane, London, EC4R 3AD. As an entity which is regulated by the FCA, Man Solutions Limited is subject to regulatory requirements, which can be found at <http://register.fca.org.uk/>.

Hong Kong: To the extent this material is distributed in Hong Kong, this material is communicated by Man Investments (Hong Kong) Limited and has not been reviewed by the Securities and Futures Commission in Hong Kong. This material can only be communicated to intermediaries, and professional clients who are within one of the professional investors exemptions contained in the Securities and Futures Ordinance and must not be relied upon by any other person(s).

Switzerland: To the extent the material is used in Switzerland the communicating entity is Man Investments AG, which is regulated by the Swiss Financial Market Supervisory Authority FINMA. The Fund has not been registered with FINMA for distribution in Switzerland but has appointed a Swiss representative and Swiss paying agent. The Swiss representative is Man Investments AG, Huobstrasse 3, 8808 Pfäffikon SZ. The Swiss paying agent is RBC Investor Services Bank S.A., Esch-sur-Alzette, Zurich Branch, Badenerstrasse 567, P.O. Box 1292, CH-8048 Zürich. The Fund and the Fund's materials may only be made available to qualified investors as defined in Article 10 of the Swiss Collective Investment Schemes Act. Recipients of this material are advised to satisfy themselves with the respective regulatory rules. In respect of the units distributed in and from Switzerland, the place of jurisdiction is Pfäffikon SZ, Switzerland. Please take note that you are only permitted to distribute this material onwards if you are licensed as distributor (or exempt according to art. 8 Collective Investment Schemes Ordinance) and have entered into a written distribution agreement with Man Investments AG.

Recipients of this material are deemed by the respective Marketing Entity to be investment professionals and/or qualified investors that have employed appropriately qualified individuals to manage their financial assets and/or are a financial services entity appointed by an investor to provide fiduciary advisory and/or portfolio management services in respect of their financial assets. Marketing Entities will provide prospective and existing investors with product and strategy information prepared by the Investment Manager and assist with queries regarding investment strategies and products managed by the Investment Manager but will not provide investment advice or personal investment recommendations, assess the suitability or appropriateness of any investment products and does not consider the particular circumstances specific to any individual recipient to whom this material has been sent nor engage in any activity which may be deemed to be "receipt and transmission of client orders" or "arranging deals" in investments.

This material is not suitable for US persons.

This material is proprietary information and may not be reproduced or otherwise disseminated in whole or in part without prior written consent. Any data services and information available from public sources used in the creation of this material are believed to be reliable. However accuracy is not warranted or guaranteed. © Man 2017

***Unless otherwise indicated, the performance data in this report is based on the reporting share class of the Fund (shown in blue in the NAV table). Past performance is not indicative of future results. Returns may increase or decrease as a result of currency fluctuations. Performance data is shown net of fees with income reinvested and does not take into account sales and redemption charges where such costs are applicable.**