

Man AHL Diversified (Guernsey)



Monthly Report as of 31 May 2023

Inception Date : 04 January 2008 **Total Platform AUM :** (USD) 159,308,609 **ISIN :** GG00B29ZYR48

Fund Risks

Prior to investing in the Fund investors should carefully consider the risks associated with investing, investors should consider the following risks and where appropriate seek professional advice before investing: Market Risk, Counterparty Risk, Investment Objective Risk, Currency Risk, Liquidity, Financial Derivatives, Leverage, Emerging Markets, Model and Data Risk and Commodity Risk. More details can be found in the Risk Glossary.

Monthly commentary

Markets responded to a potpourri of news in May. US debt-ceiling concerns rolled around again and were, once more, rolled down the road. Despite this, the US economy appeared resilient, prompting increased expectations of further rate hikes from the US Federal Reserve. Across the Atlantic, economic news was not so rosy. Growing interest in artificial intelligence generated a surge in the share price of processor manufacturer Nvidia and technology stocks more broadly. The Fund returned 2.61% net of fees with profits in FX, commodities, and fixed income outshining a loss from equities. FX trading turned in the strongest performance over the month, most notably long USD crosses as markets perceived possibly more rate rises from the Fed. The Chinese renminbi and Norwegian krone were the main beneficiaries in this regard while a trade in the Euro against the

greenback lost out as the position flipped from long to short. Within commodities, all three sub-components were profitable. Prices across the soy complex fell on news of record production forecasts, benefitting the Fund's short, while a long sugar position lost out as prices fell in May after reaching an eleven-year high. Energies notched up a gain in aggregate, profiting from a US natural gas short. Within metals, long precious positions detracted as the US dollar rallied. Trading in fixed income was also profitable, most notably from a short UK Gilts position which benefitted from an unexpectedly high inflation print, leading to predictions of more interest-rate hikes from the Bank of England. European bonds, on the other hand, rallied sharply on more downbeat economic data, leading to losses from a short Italian government bond position. Equities trading nudged into the red, with the main culprit being a position in US software and services stocks, which reversed direction as the month progressed. Long positions in Taiwanese indices, on the other hand, outperformed when the CEO of market darling Nvidia announced his confidence in the country for the manufacture of its chips. Credit trading was flat.

Net Performance and Risk*

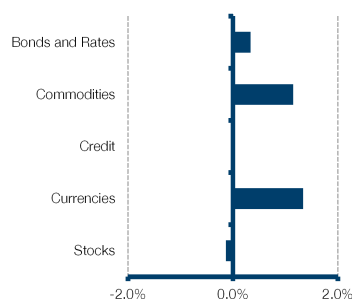
	Product
Last month	2.61 %
Last 3 months	-3.90 %
Year to date	-1.75 %
Last 12 months	-4.65 %
Last calendar year	13.14 %
Total return	89.33 %
Annualised return	4.23 %
Annualised volatility	14.13 %
Sharpe ratio ¹	0.22
Worst drawdown ²	-20.44 %
Drawdown Length	44 months
No of Drawdowns	8

Performance chart 04 January 2008 to 31 May 2023*

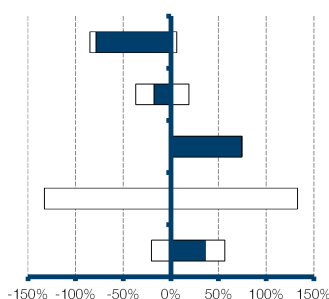


VaR (99%)	2.26 %
Expected Shortfall (99%) ³	2.58 %
Leverage ⁴	5.65

Gross Performance Contribution⁵



Sector Exposure⁶



Exposure and VaR (99%)⁶

	Short	Long	Net	VaR
Bonds and Rates	-84.83	6.19	-78.63	1.18
Commodities	-36.78	19.07	-17.71	0.71
Credit	-0.66	74.63	73.96	0.24
Currencies	-132.81	132.81	N/A	1.09
Stocks	-20.32	56.55	36.22	0.51

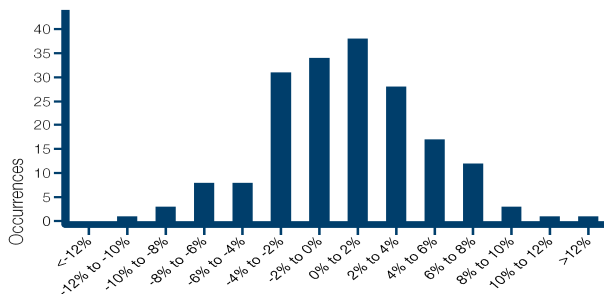
This is a marketing communication

*Unless otherwise indicated, the performance data in this report is based on the reporting share class of the Fund (shown in blue in the NAV table). Past performance is not indicative of future results. Returns may increase or decrease as a result of currency fluctuations. Performance data is shown net of fees with income reinvested and does not take into account sales and redemption charges where such costs are applicable. Please refer to the offering documents or prospectus and the KIID before making any final investment decisions.

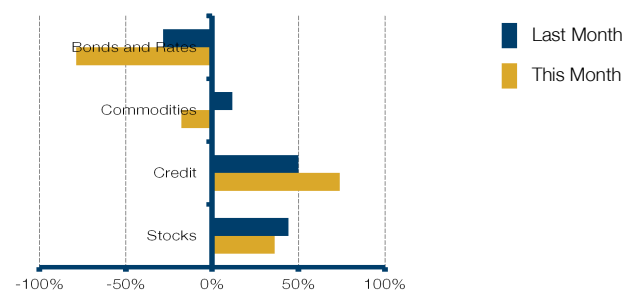
Man AHL Diversified (Guernsey)



Distribution of Monthly Returns 04 January 2008 to 31 May 2023



Net Exposure Monthly Comparison



Top 5 Markets ⁷

	MTD	EOM Position ⁸
Chinese Renminbi/US Dollar Offshore Deliverable	0.47 %	Short
Mexican Peso/US Dollar	0.45 %	Long
Norwegian Krone/US Dollar	0.33 %	Short
Copper	0.29 %	Short
Soyabeans	0.29 %	Short

Commodities Net Exposure

Agriculturals	5.04 %
Metals	-9.13 %
Energies	-13.62 %

Sovereign Bond Net Exposure

Non G10	-2.24 %
G10	-36.18 %

Top 5 Currency Exposure

USD	71.88 %
GBP	31.27 %
JPY	-25.82 %
AUD	-22.06 %
CNH	-19.97 %

Option Positioning by Asset Class

	Position	Vega ⁹
Commodities	Short vol	0.00 %
Fixed Income	Short vol	0.00 %
Equity	Short vol	-0.01 %
FX	Short vol	-0.01 %

Bottom 5 Markets ⁷

	MTD	EOM Position ⁸
Silver	-0.31 %	Long
South Korean Won/US Dollar	-0.21 %	Short
Euro/US Dollar	-0.20 %	Short
RBOB Gasoline	-0.18 %	Short
UK Sterling/US Dollar	-0.16 %	Long

Sector

	CS01 ¹⁰	DV01 ¹¹
Credit	-0.03 %	0.00 %
Bonds and Rates	0.00 %	0.06 %

Equity Sector Exposure

Broad Market Indices	27.94 %
Consumer Discretionary	1.15 %
Consumer Staples	3.31 %
Communication Services	0.26 %
Energy	-0.18 %
ETFs	-0.05 %
Financials	-0.47 %
Health Care	-0.09 %
Industrials	2.88 %
Information Technology	0.92 %
Materials	0.41 %
Real Estate	-0.31 %
Unclassified	0.00 %
Utilities	0.45 %

*Unless otherwise indicated, the performance data in this report is based on the reporting share class of the Fund (shown in blue in the NAV table). Past performance is not indicative of future results. Returns may increase or decrease as a result of currency fluctuations. Performance data is shown net of fees with income reinvested and does not take into account sales and redemption charges where such costs are applicable. Please refer to the offering documents or prospectus and the KIID before making any final investment decisions.

Man AHL Diversified (Guernsey)



Historical performance* ¹²

Year	Jan	Feb	Mar	Apr	May	Jun	Jul	Aug	Sep	Oct	Nov	Dec	YTD ¹³
2023	1.08 %	1.14 %	-8.91 %	2.82 %	2.61 %								-1.75 %
2022	-0.68 %	2.86 %	9.41 %	5.61 %	-1.23 %	0.50 %	-5.13 %	3.26 %	7.38 %	-0.99 %	-7.34 %	0.07 %	13.14 %
2021	-2.56 %	4.40 %	1.71 %	4.49 %	3.35 %	-2.53 %	1.38 %	-0.55 %	-3.70 %	5.02 %	-8.02 %	0.96 %	3.14 %
2020	-1.19 %	-0.29 %	10.22 %	-2.23 %	-2.54 %	-2.57 %	2.30 %	0.92 %	-3.50 %	-1.69 %	2.55 %	9.67 %	11.05 %
2019	-3.52 %	-0.29 %	5.12 %	3.50 %	0.81 %	2.58 %	7.40 %	6.00 %	-6.98 %	-6.36 %	1.16 %	1.29 %	9.96 %
2018	6.68 %	-10.87 %	-1.05 %	-1.44 %	0.11 %	1.64 %	-3.10 %	5.25 %	-3.09 %	-1.37 %	-0.79 %	5.76 %	-3.50 %
2017	-1.36 %	2.70 %	-3.03 %	-0.38 %	2.72 %	-3.26 %	3.40 %	3.74 %	-5.67 %	6.76 %	-0.43 %	0.39 %	5.00 %
2016	4.27 %	3.32 %	-2.13 %	-5.48 %	-3.30 %	2.81 %	1.10 %	-3.57 %	-2.75 %	-2.92 %	-0.31 %	1.66 %	-7.59 %
2015	7.18 %	-0.74 %	1.80 %	-4.17 %	-2.66 %	-7.36 %	6.24 %	-0.33 %	3.64 %	-5.85 %	4.01 %	-3.23 %	-2.68 %
2014	-2.91 %	0.99 %	-0.16 %	-0.16 %	6.75 %	4.30 %	0.90 %	5.90 %	2.10 %	2.07 %	7.58 %	2.72 %	33.93 %
2013	2.06 %	0.19 %	1.88 %	6.02 %	-3.67 %	-7.98 %	-2.60 %	-0.29 %	-3.81 %	6.48 %	0.39 %	-0.44 %	-2.66 %
2012	0.25 %	2.16 %	-1.63 %	-1.44 %	-1.67 %	2.66 %	1.12 %	-2.87 %	1.18 %	-3.56 %	1.11 %	1.64 %	-1.27 %
2011	-3.53 %	1.24 %	-4.70 %	4.21 %	-1.32 %	-1.27 %	-0.13 %	6.88 %	0.59 %	-6.74 %	1.01 %	-2.03 %	-6.37 %
2010	-1.96 %	-0.78 %	5.56 %	2.08 %	-1.59 %	1.03 %	-2.12 %	6.90 %	1.20 %	8.47 %	-8.25 %	5.71 %	16.10 %
2009	-2.32 %	0.13 %	-6.05 %	-4.08 %	0.38 %	-3.61 %	0.89 %	-0.78 %	2.86 %	-1.41 %	2.30 %	-5.90 %	-16.65 %
2008	3.03 %	2.48 %	4.31 %	0.94 %	3.18 %	1.36 %	-6.14 %	-3.85 %	-0.92 %	14.71 %	1.15 %	5.50 %	27.25 %

NAV Table ^{14 15}

Class	NAV	ISIN	Bloomberg	Institutional or Distribution	Last Month Return	2020 Return	2021 Return	2022 Return
A USD	1.8933	GG00B29ZYR48	MAHLGDG GU	D	2.61 %	11.05 %	3.14 %	13.14 %
B EUR	1.4946	GG00B3CTZB13	MANADGE GU	D	2.38 %	8.93 %	3.19 %	11.64 %
C CHF	1.2269	GG00B3CTZD37	MANAHLG GU	D	2.17 %	8.24 %	3.08 %	11.49 %

Key Facts ¹⁶

Investment manager	AHL Partners LLP	Management fee	Up to 3% per annum
Administrator	BNY Mellon Fund Services (Ireland) Designated Activity Company	Introducing Broker fee	1% per annum
Valuation agent	Citibank Europe plc	Minimum investment	From USD 30,000
Performance fee	16.67%	Currencies	USD / EUR / CHF / AUD / RMB

¹ Sharpe ratio is calculated using a risk-free rate in the appropriate currency over the period analysed. Where an investment has underperformed the risk-free rate, the Sharpe ratio will be negative. Because the Sharpe ratio is an absolute measure of risk-adjusted return, negative Sharpe ratios are not shown as they can be misleading. ² The drawdown is the percentage drop in the price of an investment from its last peak price. The worst drawdown represents the greatest peak to trough decline over the life of an investment. ³ Expected Shortfall is defined as the average of all losses which are greater than or equal to VaR. ⁴ Leverage displayed here is calculated using the sum of gross exposure from each sector traded by the AHL Programme and therefore does not include leverage from FX hedging or cash management and in no way reflects regulatory leverage calculations. Exposure calculations used are the same as detailed in the exposure reference note with exposures netted at the underlying security level. ⁵ The figures are estimated and generated on a fund level and do not take into account the fees/interest/commission charges on any particular account. Differences may also occur due to slippage variation, portfolio changes, FX movements and post execution adjustments. Therefore the sum total of these sector indications will not necessarily equate to the reported performance for the month in question. ⁶ Exposure values represent the delta notional value of positions expressed as a percentage of fund capital. Where applicable, fixed income exposures are adjusted to a 10 year bond equivalent. Currency exposure within this table only reflects that of the Currency sector traded by Man AHL and does not include FX hedging or cash management. For credit default swaps, a short position represents buying protection and a long position represents selling protection. ⁷ The organisations and/or financial instruments mentioned are for reference purposes only. The content of this material should not be construed as a recommendation for their purchase or sale. ⁸ End of month (EOM) position. ⁹ The measurement of an option's sensitivity to changes in the volatility of the underlying asset. Vega represents the amount that an option contract's price changes in reaction to a one percent change in the volatility of the underlying asset. ¹⁰ CS01 is the impact on the fund in response to a one basis point increase in credit spreads. ¹¹ DV01 is the impact on the fund in response to a one basis point increase in interest rates. ¹² Please note that statistics have been calculated using the last weekly valuation of each month up to and including 30th June 2014. From that date forward a non-dealing calendar month end NAV has been used for the purposes of reporting monthly returns and performance statistics. ¹³ When 12 months of performance data is unavailable for a calendar year, partial year to date is shown. ¹⁴ The ISINs shown here are for tranche B of each class. Tranche A is closed to new investment for the AUD, CHF and RMB classes. NB the tranche A ISINs are as follows for each class: USD = GG00B29ZYR48, EUR = GG00B3CTZB13, CHF = GG00B3CTZD37, AUD = GG00B3X89L55 and RMB = GG00B3WXTG65. ¹⁵ The performance data is based on the reporting share class of the Fund (shown in blue in the NAV table). ¹⁶ Introducing Broker fee: The fee is payable to Man Investments AG which has been appointed as the Introducing Broker and is responsible for recommending appropriate Brokers to the Fund as well as actively managing these relationships, ensuring appropriate service levels as well as an adequate diversification of Brokers. For full details of fees and expenses which may be incurred by the Fund, including fees payable to members of Man Group, refer to the Fees and Expenses section of the Prospectus or any relevant Prospectus Supplement. Redemption Fee: For tranche A of each share class there is a fee payable on redemption within the first six years. During first two years: 2% of NAV, during the third or fourth year: 1.5% of NAV, during fifth or sixth year: 0.5% of NAV (refer to the Prospectus Supplement for full details).

Risk Glossary

Market Risk: The Fund is subject to normal market fluctuations and the risks associated with investing in international securities markets and therefore the value of your investment and the income from it may rise as well as fall and you may not get back the amount originally invested.

Counterparty Risk: The Fund will be exposed to credit risk on counterparties with which it trades in relation to on-exchange traded instruments such as futures and options and where applicable, 'over-the-counter' ("OTC", "non-exchange") transactions. OTC instruments may also be less liquid and are not afforded the same protections that may apply to participants trading instruments on an organised exchange.

Currency Risk: The value of investments designated in another currency may rise and fall due to exchange rate fluctuations. Adverse movements in currency exchange rates may result in a decrease in return and a loss of capital. It may not be possible or practicable to successfully hedge against the currency risk exposure in all circumstances.

Liquidity Risk: The Fund may make investments or hold trading positions in markets that are volatile and which may become illiquid. Timely and cost efficient sale of trading positions can be impaired by decreased trading volume and/or increased price volatility.

Financial Derivatives: The Fund will invest in financial derivative instruments ("FDI") (instruments whose prices are dependent on one or more underlying asset) to achieve its investment objective. The use of FDI involves additional risks such as high sensitivity to price movements of the asset on which it is based. The extensive use of FDI may significantly multiply the gains or losses.

Leverage Risk: The Fund's use of FDI may result in increased leverage which may lead to significant losses.

Emerging Markets: The Fund may invest a significant proportion of its assets in securities with exposure to emerging markets which involve additional risks relating to matters such as the illiquidity of securities and the potentially volatile nature of markets not typically associated with investing in other more established economies or markets.

Model and Data Risk: The Fund's Investment Manager relies on quantitative trading models and data supplied by third parties. If models or data prove to be incorrect or incomplete, the Fund may be exposed to potential losses. Models can be affected by unforeseen market disruptions and/or government or regulatory intervention, leading to potential losses.

Commodity Risk: The Fund may have exposure to commodities, the value of which can be volatile and may carry additional risk. Commodity prices can also be influenced by the prevailing political climate and government stability in commodity producing nations.

Investment Objective Risk: There is no guarantee that the fund will achieve its investment objective.

Important Information

The value of an investment and any income derived from it can go down as well as up and investors may not get back their original amount invested. Alternative investments can involve significant additional risks.

This material is for information purposes only and does not constitute an offer or invitation to invest in any product for which any Man Group plc affiliate provides investment advisory or any other services. The content is not intended to constitute advice of any nature nor an investment recommendation or opinion regarding the appropriateness or suitability of any investment or strategy and does not consider the particular circumstances specific to any individual recipient to whom this material has been sent. Prior to making any investment decisions, investors should read and consider the fund's offering documents.

Opinions expressed are those of the author as of the date of their publication, and are subject to change.

Some statements contained in these materials concerning goals, strategies, outlook or other non-historical matters may be "forward-looking statements" and are based on current indicators and expectations at the date of their publication. We undertake no obligation to update or revise them. Forward-looking statements are subject to risks and uncertainties that may cause actual results to differ materially from those implied in the statements.

Distribution of this material and the offer of shares may be restricted and the minimum subscription amount may be higher in certain jurisdictions. The product(s) mentioned within this material (i) may not be registered for distribution in your jurisdiction, and (ii) may only be available to professional or otherwise qualified investors or entities. It is important that distributors and/or potential investors are able to ensure compliance with local regulations prior to making a subscription. Please refer to the offering documentation for additional information.

Unless stated otherwise the source of all information is Man Group plc and its affiliates as of the date on the first page of this material.

Unless stated otherwise the source of all market data is Man Group plc.

This material was prepared by AHL Partners LLP ("Investment Manager") (company number OC380907) which is registered in England and Wales at Riverbank House, 2 Swan Lane, London, EC4R 3AD. Authorised and regulated in the UK by the Financial Conduct Authority. This material is distributed pursuant to global distribution and advisory agreements by subsidiaries of Man Group plc ("Marketing Entities"). Specifically, in the following jurisdictions:

Australia: To the extent this material is distributed in Australia it is communicated by Man Investments Australia Limited ABN 47 002 747 480 AFSL 240581, which is regulated by the Australian Securities & Investments Commission (ASIC). This information has been prepared without taking into account anyone's objectives, financial situation or needs.

European Economic Area: Unless indicated otherwise this material is communicated in the European Economic Area by Man Asset Management (Ireland) Limited ("MAMIL") which is registered in Ireland under company number 250493 and has its registered office at 70 Sir John Rogerson's Quay, Grand Canal Dock, Dublin 2, Ireland. MAMIL is authorised and regulated by the Central Bank of Ireland under number C22513.

United Kingdom: Unless indicated otherwise this material is communicated in the United Kingdom by Man Solutions Limited ("MSL") which is an investment company as defined in section 833 of the Companies Act 2006. MSL is registered in England and Wales under number 3385362 and has its registered office at Riverbank House, 2 Swan Lane, London, EC4R 3AD, United Kingdom. MSL is authorised and regulated by the UK Financial Conduct Authority (the 'FCA') under number 185637.

Hong Kong SAR: To the extent this material is distributed in Hong Kong SAR, this material is communicated by Man Investments (Hong Kong) Limited and has not been reviewed by the Securities and Futures Commission in Hong Kong.

Switzerland: To the extent the material is distributed in Switzerland the communicating entity is Man Investments AG ("The Swiss Representative"), Huobstrasse 3, 8808 Pfäffikon SZ, Switzerland. The Swiss Representative is regulated by the Swiss Financial Market Supervisory Authority ("FINMA"). The Fund has not been registered for distribution / offering with FINMA. The Fund and the Offering Memorandum and/or any other offering materials relating to the Shares may only be distributed / offered to qualified investors as defined in Art. 10 of the Swiss Collective Investment Schemes Act. The Swiss paying agent is RBC Investor Services Bank S.A., Esch-sur-Alzette, Zurich Branch, Badenerstrasse 567, P.O. Box 1292, CH-8048 Zurich, Switzerland. The Offering Memorandum, the Articles of the Fund and the annual financial statements of the Fund may be obtained free of charge from the Swiss Representative. In respect of the Shares distributed / offered in or from Switzerland, the place of performance and the place of jurisdiction are at the registered office of the Swiss Representative in Switzerland.

Recipients of this material are deemed to be investment professionals and/or qualified investors that have employed appropriately qualified individuals to manage their financial assets and/or are a financial services entity appointed by an investor to provide fiduciary advisory and/or portfolio management services in respect of their financial assets. Information provided in response to queries regarding investment strategies and products managed by the Investment Manager will not be deemed to be provision of investment advice or personal investment recommendations, or assessment of the suitability or appropriateness of any investment products or consideration of the particular circumstances specific to any individual recipient to whom this material has been sent.

This material is not suitable for US persons.

This material is proprietary information and may not be reproduced or otherwise disseminated in whole or in part without prior written consent. Any data services and information available from public sources used in the creation of this material are believed to be reliable. However accuracy is not warranted or guaranteed. © Man 2023.

***Unless otherwise indicated, the performance data in this report is based on the reporting share class of the Fund (shown in blue in the NAV table). Past performance is not indicative of future results. Returns may increase or decrease as a result of currency fluctuations. Performance data is shown net of fees with income reinvested and does not take into account sales and redemption charges where such costs are applicable. Please refer to the offering documents or prospectus and the KIID before making any final investment decisions.**